

## NEW WORKPLACE PROJECT

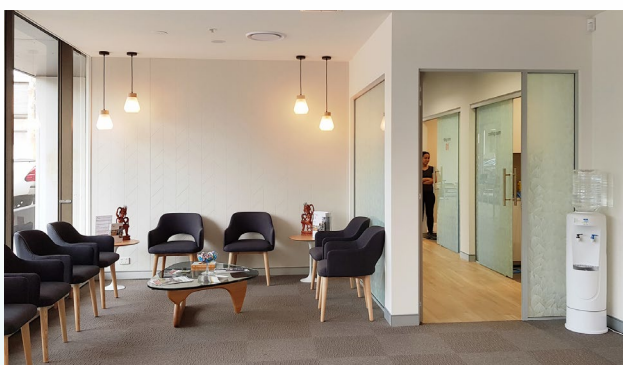
**Our latest project, APC Prosthetics, has recently been completed in Alexandria.** APC had successfully outgrown their existing tenancy (also by Forward Thinking Design) and were relocating into a bigger space next door.

The design brief was to create an environment with a boutique aesthetic that is welcoming to patients and visitors, and provides a sense of ability and empowerment, rather than being clinically focused on disability. To this, FTD added a goal of reusing and recycling furniture, fixtures, fittings and materials from the existing tenancy, where possible, to reduce APC's fitout costs and environmental impact.

In defining the space planning strategy, FTD worked with APC to co-create a brief based around ergonomics, accessibility and functionality. The designers also situated the glazed fitting rooms as an island in the tenancy to maximise the natural light penetration throughout the space and to create separated public and private thoroughfares. This supports the staff access to and from the manufacturing workshop and rooms.

A strong understanding of the client's business and technical requirements was paramount and included critical considerations around privacy, wellbeing, surfaces, manual work spaces, biomechanics, cleaning, safety, sound abatement, lighting, communications and storage. The long term, ongoing relationship between FTD, APC and The Office Builders allowed these issues to be addressed easily, from a well-informed perspective all round.

Aesthetically, a light grey, white and timber colour palette was employed to compliment the natural light focussed layout plan. The use of timber and a leaf patterned privacy vinyl also blurs the lines between 'indoor' and 'outdoor' to create this tranquil, healthy, professional and human-centric space.

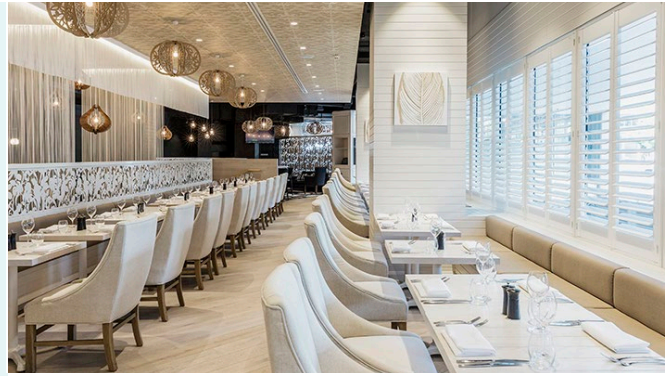


## WHY CHOOSE FORWARD THINKING DESIGN?

**Did you know that Forward Thinking Design is a social enterprise?** When you choose to work with us you are also supporting the pro bono & reduced fee work we do with charities and other social enterprises. It's a win/win! You receive great advice and design from us and then we pay your loyalty forward by amplifying the impact of other positive change makers!

**Check out this simple animation from our website that explains how we do what we do, and how you can join us in building a better world.**

[Watch here](#)



**choosing ethical  
makes you a better  
corporate citizen**



## BRINGING EMBODIED CARBON UPFRONT

**The built environment is responsible for 39% of global carbon emissions**, and with climate change as a real and undeniable threat to our planet, the building and development community must make significant changes to how we conduct 'business as usual'. The World Green Building Council's "Bringing Embodied Carbon Upfront" report provides a framework to decarbonise across the entire life cycle of buildings.

[Read more](#)

## RESTORED GLORY

**The iconic art deco Capitol Theatre in Melbourne has recently undergone a multi-million dollar refurbishment.** The theatre was shut down in 2014 due to the requirement for substantial restoration. We love how the now reopened theatre has been transformed into a contemporary hub for research, culture and innovation, with great care taken to respect and restore original decorative features such as the foyer carpet and the geometric ceiling.

[Read more](#)







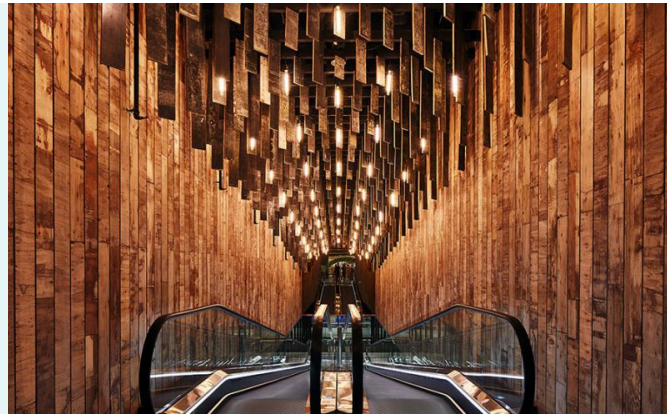
## PERFECTLY IMPERFECT

The Japanese philosophy 'wabi sabi' challenges the Western ideals of perfection and flawlessness, instead recognising the beauty of the 'broken' or imperfect. The notion of wabi sabi encourages us to repair, re-use and to celebrate the marks of time and age.

[Read more](#)

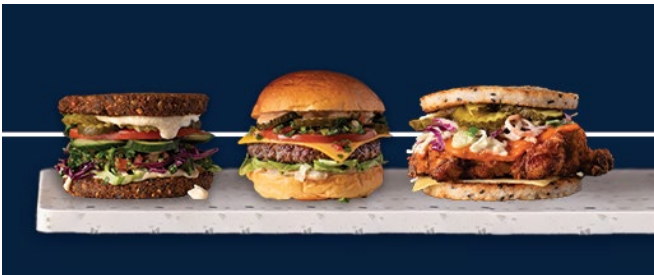
## WHAT'S NEW IN RETAIL AND SERVICES

Fraser's Property Australia's Burwood Brickworks shopping centre opened on December 6th in Burwood East, Victoria. **The project is on its way to becoming the most sustainable shopping centre in the world.**

[Read more](#)

## WHAT'S NEW IN FOOD & HOSPITALITY

**Industry Beans serves specialty coffee from a heritage listed building on York Street.** Customers can grab unconventional drinks such as a cold-brew bubble cup, and eventually the aim is for all coffees to be made within 3 minutes. We like the creative menu and minimalist interior of this coffee shop.

[Read more](#)

**This January marked the opening of BunBar in Manly,** a burger bar that ditches traditional buns in favour of more unusual choices such as falafel "bread" and grilled rice buns.

[Read more](#)

## WHAT'S NEW IN BUSINESS

**Yarra Valley Water have applied amazing forward thinking design to their business and services.** In 2017 the organisation handed over their strategic plan to a jury of 35 customers, and took all of their recommendations on board to ensure they provide what the community expect and value.

[Read more](#)

## ASSISTANCE FOR THOSE AFFECTED BY NSW BUSHFIRES

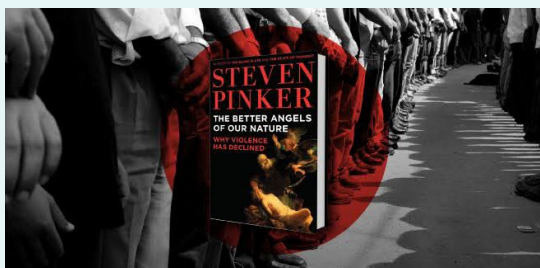


We would like to invite charities, social enterprises and small businesses, affected by the fires in NSW, to apply to Forward Thinking Design for our professional support in a pro bono or 'at cost' capacity as appropriate.

[Read more & apply here](#)

## WHAT WE'RE READING THIS MONTH

**The Better Angels of Our Nature**, Steven Pinker



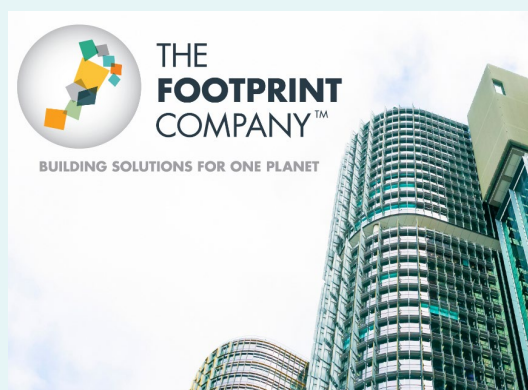
## WHAT WE'RE WORKING ON & WHO WITH

- A Golf Club Building Master Plan in Regional NSW
- Large Office/Medical Services Interior Design Projects in Sydney and Tuggerah
- An Office/Warehouse Relocation in Sydney
- Purpose-centred Brand Strategy for a Yoga and Meditation Teacher
- Environmental Impact Reduction Initiatives for Interior Fitout Industry Australia-wide
- Ethical Procurement Platform for B Local Sydney Members

## COMING UP IN 2020...

At FTD we're looking forward to an exciting 2020, with new collaborations in the works.

We will be working with The Footprint Company, who assist the property and development industry to manage carbon emissions. We are utilising their industry leading software, to assess the "whole of life" carbon management of our projects (including carbon footprint, operating energy costs and Energy Star Rating) to save our clients money and to reduce environmental impact.



[Learn more about The Footprint Company](#)

### Social Media

 [facebook.com/forwardthinkingdesign](https://facebook.com/forwardthinkingdesign)  
 [instagram.com/forwardthinkingdesign](https://instagram.com/forwardthinkingdesign)

### Phone

Phone : + 61 2 8850 4977  
Mobile : + 61 403 867 807

### Online

Email : [info@forwardthinkingdesign.com.au](mailto:info@forwardthinkingdesign.com.au)  
Website : [forwardthinkingdesign.com.au](https://forwardthinkingdesign.com.au)